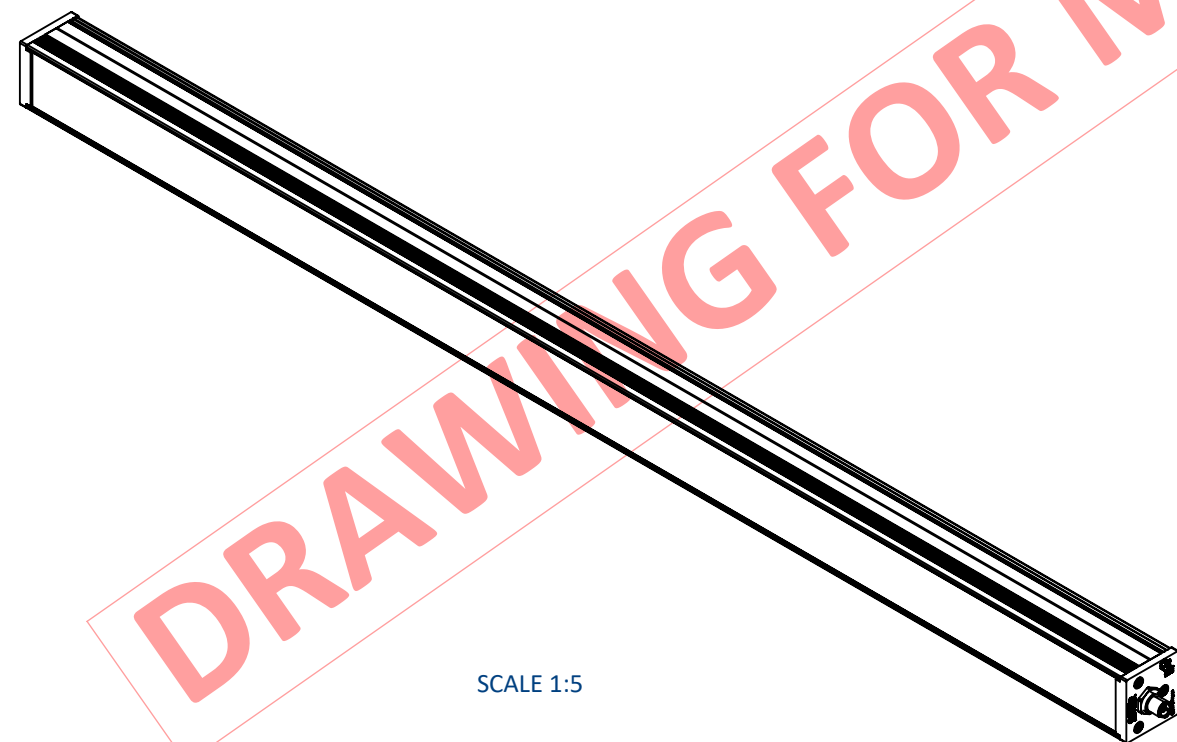
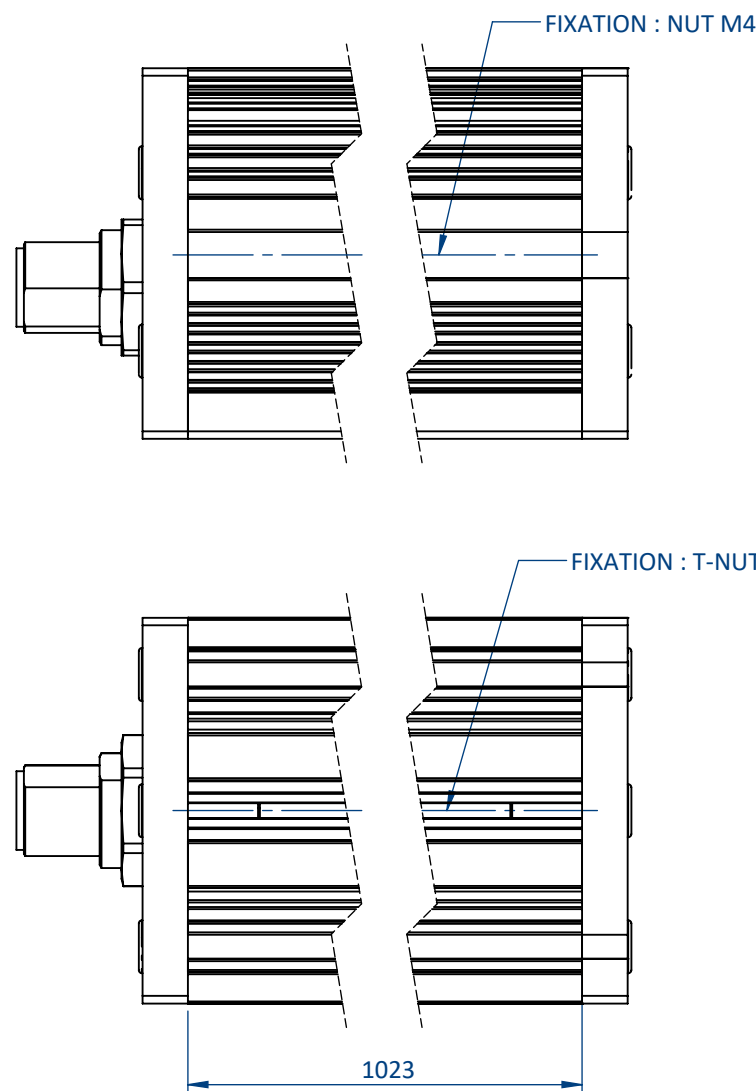


THIS DOCUMENT AND THE INFORMATION IT CONTAINS ARE PROPERTY OF
EFFLUX AND CONFIDENTIAL. THEY SHALL NOT BE REPRODUCED NOR
DISCLOSED TO ANY PERSON EXCEPT TO THOSE HAVING A NEED TO KNOW
THEM WITHOUT PRIOR WRITTEN CONSENT OF EFFLUX

CE DOCUMENT ET LES INFORMATIONS QU'IL CONTIENT SONT CONFIDENTIELS ET SONT LA
PROPRIÉTÉ EXCLUSIVE DE EFFLUX. ILS NE DOIVENT ÊTRE COMMUNIQUÉS QU'ÀUX
PERSONNES AYANT A EN CONNAÎTRE ET NE PEUVENT ÊTRE REPRODUITS NI DIVULGUÉS À
TOUTE AUTRE PERSONNE SANS AUTORISATION PRÉALABLE ÉCRITE PAR EFFLUX

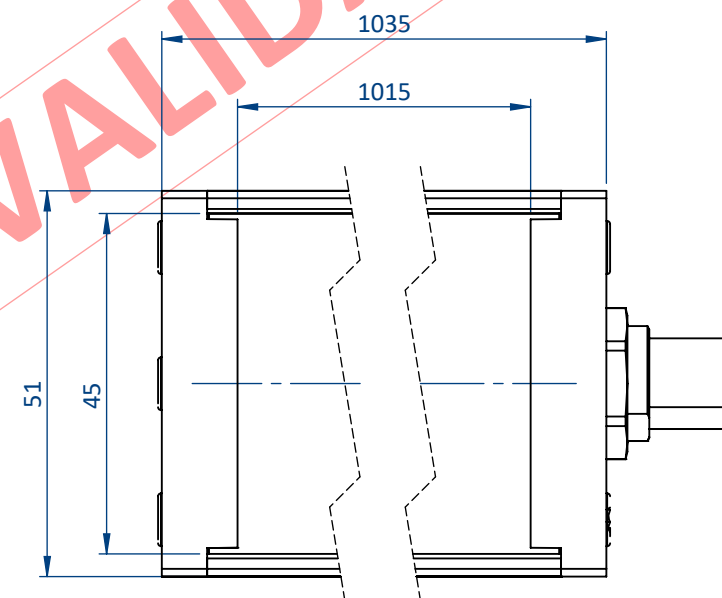
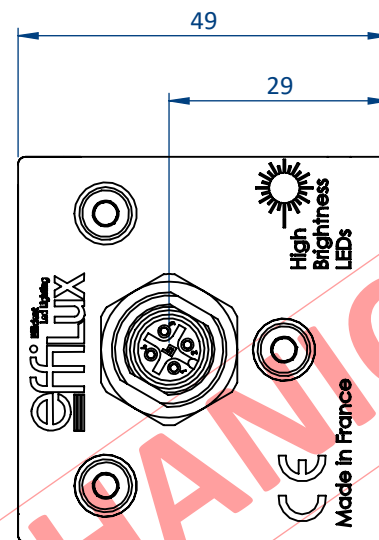


SCALE 1:5






FIXATION : NUT M4

FIXATION : T-NUT SLOT 8 M6



PLEASE REFER TO THE PRODUCT'S DATASHEET FOR THE CONNECTOR

				IP 50	
Designation ELB-1000 / ELB-L2-1000 / ELFB-1000					
Revision A		Date 17/10/2018		Unit : mm 	 ISO 2768 - fH-E
Scale 1:1	Format A3	Page 1/1			